

HAVAL

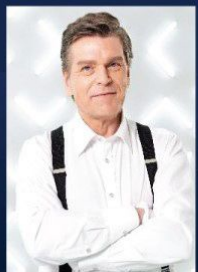
THE ALL NEW

H6

A CLOSER LOOK



Over 300 Top International Experts Working with the Haval Brand



Gerhard Henning
Transmission



Yvan Le Neindre
EV



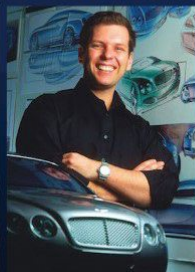
Phil Simmons
Designer



Ramon Ginah
Designer



Chris Zarlenga
Designer



Raul Pires
Designer



Emanuel Derta
Designer



Oriental Futurism

The 3rd Gen Haval H6 adopts Oriental Futurism design concept, which is not about overtly aggressiveness but more about sophisticated elegance



Rising Flame LED Headlamp



Horizon Rear LED Taillight



Oriental Futurism Design Concept



Vivid Body Proportion

Dimensions

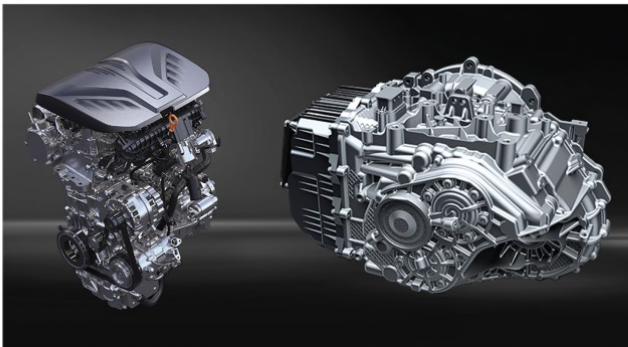
The minimum ground clearance, approach angle and departure angle are the quiescent values under technical conditions



HAVAL Architecture L.E.M.O.N. Platform



Advanced smart lean production concept using most automated and world's top Swedish ABB robotics



2.0 GDIT Gasoline

7DCT

2.0 GDIT ENGINE,

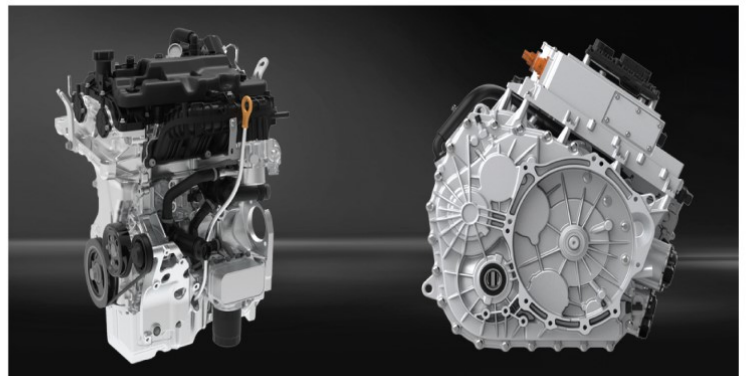
Adopts Miller cycle, electronic water pump, 12:1 high compression ratio, and other advanced technologies. The thermal efficiency is up to 38%.

The second generation 7DCT,

Reduced the throttle response time by 200ms, and improved the shift efficiency by 100ms.



Advanced Power



1.5T HEV Gasoline

DTH

1.5T ENGINE

Maximum power is 113kW, maximum torque is 233 N•m.

4B15D HEV

The engine maximum power is 113KW, maximum torque is 233 N•m and the motor maximum power is 130kW, maximum torque is 300 N•m.

Intelligent 4WD System

Can detect transient response and torque distribution between systems within 110ms, detect 1200N•m load distribution and transmission capacity, and make the torque ratio of front and rear axles up to 50/50.

Global Intelligent Protection, Full Dimensional Security Guard

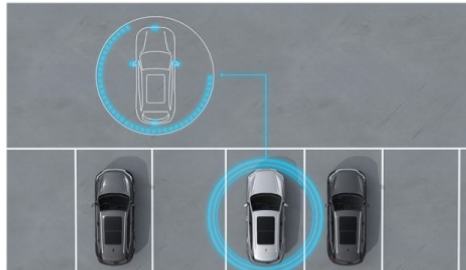
Lighter and Stronger Chassis

Reduced body weight by 44 kg, enhanced performance by 10% and saved fuel consumption by over 14.5%



6 Omni-Directional Airbags

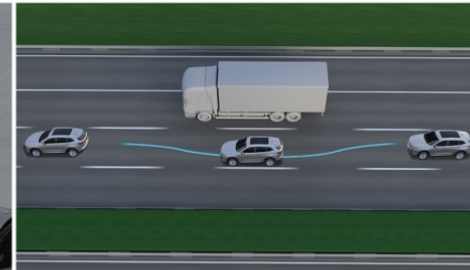
71.61% High-strength Steel Body



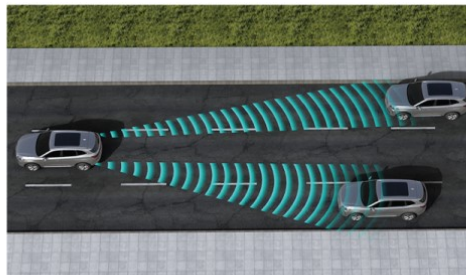
AVM (Around View Monitor System)



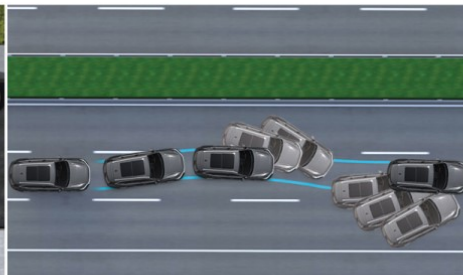
Full Scene Auto Parking



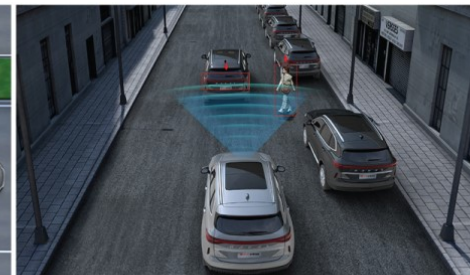
Whole Road Section Intelligent Dodge



LCA + Astern Side Warning



9.3 ESP



AEB

The 3rd Gen HAVAL H6 is developed under Haval's latest high-intelligence \$4 billion L.E.M.O.N.* global modular platform that boasts high performance, high safety, and lightweight technology. With super high rigidity body frame of up to 2,000 Mpa high strength steel and 3DP safety concept (Passenger, Pedestrian, and Parts), effectively takes all the crash impacts & keep the occupants safe.

*www.haval-global.com/news/1156013.html

Intelligent Car all the Way Forward

With intelligent equipment (carplay & android auto, wireless charge, W-HUD), sensitive response and easy control, we stride all the way from "intelligence" to "wisdom"



Apple CarPlay & Android Auto



Wireless Charge



Windshield with Heads Up Display



Future Science and Technology Space

The minimalist interior creates a pleasant and surprising technology experience for you



4 High Tone Speakers
+ 4 Low Tone Speakers +DTS



10.25-inch Virtual Instrument



12.3-inch Ultra-smart
Touch Screen



High Gloss Electroplating
Rotary Shift Gear Knob



Front Seat Heating/
Ventilation



Electro-optic Gold/Silver
Decoration



Panoramic Sunroof

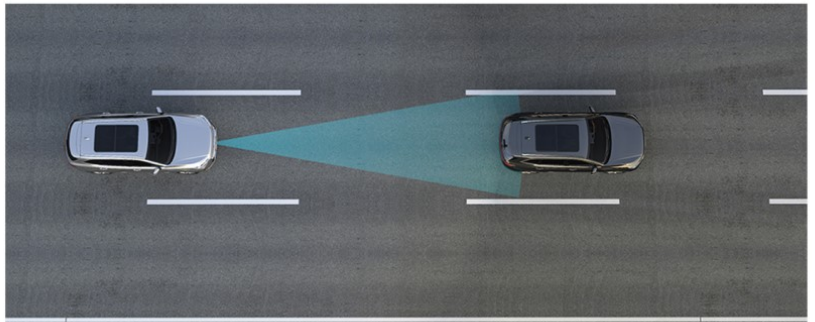


Driver's Seat with 8-direction
Electric Adjustable

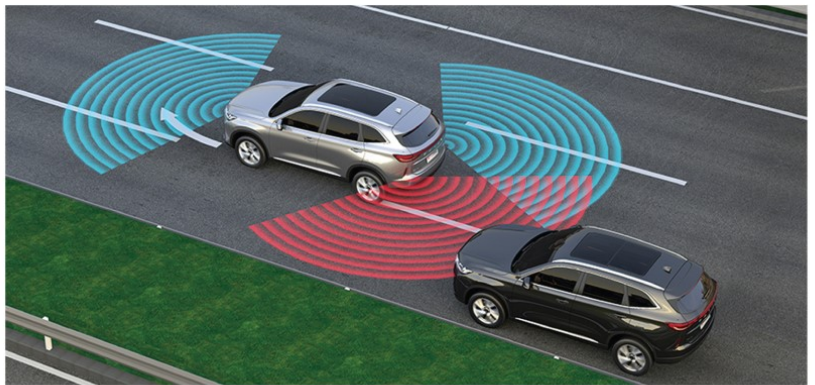
Protect Your Safety Every Time You Explore

Intelligent Mobility

L2 level automatic driving with Adaptive Cruise Control (ACC) at full speed, Traffic Sign Recognition (TSR), lane-keeping and other driving assistance functions, make your driving easy and enjoyable.



ACC + ICA (Intelligent Cruise Assistance) + TJA (Traffic Jam Assistance)



LKA (Lane-keeping Assistance)



360 Degree View Camera



3D Smart Surround View



TSR (Traffic Signal Recognition)

Salient Features

L.E.M.O.N. Platform | 2.0 liter VVTI Turbo Engine | 7 Speed DCT (Wet Clutch) | 6 All Directional Airbags | Wireless Charging | Apple CarPlay & Android Auto | Adaptive Cruise Control | Parking Aid System | Blind Spot Detection | Fatigue Monitoring | W-HUD (Windshield with Heads Up Display) | 12.3 inch Large LCD | Front Collision Warning | Automatic Emergency Braking | Lane Departure Warning | Electric Tailgate With Delayed Closing And Memory Function | Rotary Shift Gear Knob.

EXTERIOR COLORS



Ayers Grey



Red



Hamilton White



Messiah Brown



Green



Atlantis Blue



Black



18-inch Astrolabe Wheel Hub



19-inch Vortex Wheel Hub

INTERIOR COLORS



Black and Red Interior



Black and Grey Interior



Black Interior



Black and Brown Interior

Extended Warranty



CONFIGURATION TABLE

● " Standard; ○ " Optional; "x" not available.

Main Configuration		Main Configuration			Luxury	Essence	Premium
Emission Standard	Euro V+			Reverse Camera	●	1.5L/2.0L (2WD)	2.0L (4WD)
Driveline	4x2 / 4x4			360 View	x	●	●
Transmission	7DCT			Full-Auto Parking	x	x	●
Length x width x height	4657*1886*1724 (mm)			Cruise Control System	●	●	x
Wheelbase	2738 mm			ACC (Adaptive Cruise Control)+Go/Stop	x	●	●
Suspension (Front)	Macpherson Independent Suspension			Intelligent Turning	x	●	●
Suspension (Rear)	Multi Link Independent Suspension			FCW (Forward Collision Warning) + AEB (Automatic Emergency Braking)	x	●	●
Engine	4B15D Turbo / 4N20 Turbo			Astern Side Warning	x	●	●
Piston Displacement	1497 cc / 1998 cc			Astern Side Warning Braking	x	●	●
Max. Power	110 kW (1.5L) / 155 kW (2.0L)			LDW (Lane Departure Warning)	x	●	●
Max. Torque	230 N.m (1.5L) / 320 N.m (2.0L)			LKA (Lane Keep Assist)	x	●	●
Horsepower	148 hp (1.5L) / 208 hp (2.0L)			LCK (Lane Central Keeping)	x	●	●
Minimum Ground Clearance	210 mm			AEB-Bicycle	x	●	●
GVW (Gross Vehicle Weight)	1996 kg (1.5L) / 2075 kg (2.0L)			AEB-People	x	●	●
Curb Weight	1558 kg (1.5L) / 1666 kg (2.0L)			BSD (Blind Spot Detection)+ LCA (Lane Change Assist)	x	x	●
Pay Load	409 kg			ICA (Intelligent Cruise Assistance)	x	●	●
Turning Radius	≤ 6 m			Intelligent Dodge	x	x	●
Fuel Tank Capacity	58 Liter (1.5L) 60 Liter (2.0L) 2WD / 61 Liter (2.0L) 4WD			ELK (Emergency Lane Keeping)	●	x	●
Electric System				AEB-Crossroad	x	●	●
System Voltage (DC)	12V			Over Speed Warning	●	●	●
Battery	12V, 70Ah			Child Seat Fixing Device	●	●	●
	Luxury	Essence	Premium	Immobilizer			
Chassis & Steering System	1.5L/2.0L (2WD)	1.5L/2.0L (2WD)	2.0L (4WD)	Intelligent Key (Two)	●	●	●
Electric Shift	●	●	●	Keyless Entry System	●	●	●
Electronic Parking Brake (EPB)	●	●	●	Button Type Push-To-Start System	●	●	●
Auto Hold	●	●	●	Car Locating Function	●	●	●
Front Ventilated Disc Brakes+Rear Disc Brakes	●	●	●	Engine Immobiliser	●	●	●
Drive Mode- 1.5T/2.0T 2WD (Std/Sport/Eco/Snow)	●	●	●	Anti-theft Alarm System	●	●	●
Drive Mode 8 : 2.0T 4WD (Mode Choosable + Terrain Response System : Standard, Economy, Sports, Snow, Sand, Off-road)	x	●	●	Speed-sensing Central Door Lock	●	●	●
Auto Start-Stop	●	●	●	Remote Control Central Door Lock	●	●	●
225/60 R18 Tyres	●	●	x	Automatic Crash Unlock Function	●	●	●
225/55 R19 Tyres	x	x	●	Automatic Locking Return Function	●	●	●
T135/90 R17 (Normal)	●	●	●	Door Anti-Error Locking Function	●	●	●
Spare Tire	●	●	●	Door Ajar Warning System	●	●	●
External Equipments				Media			
Manual Tailgate	●	x	x	Trip Computer	●	●	●
Electric Tailgate With Delayed Closing And Memory Function	x	●	●	10.25 Inch Colours Instruments	●	●	●
Front Boneless Wiper	●	●	●	Radio: FM/AM	●	●	●
Automatic Wiper	●	●	●	Bluetooth Hands-Free Calls System	●	●	●
Rear Boneless Wiper	●	●	●	10.25 Inch Touch Screen	●	●	x
Roof Rail	x	●	●	12.3 Inch Touch Screen	x	x	●
Panoramic Sunroof	x	○	○	Front Dual USB With Data Transfer Function	●	●	●
Shark Fin Antenna	●	●	●	Rear Dual USB W/O Data Transfer Function	●	●	●
Grille One (Grid with Grey Sprayed)	●	●	●	2 High Tone Speakers + 2 Low Tone Speakers + 2 Full Frequency Speaker + DTS	●	●	x
Grille Two (Horizontal Bar)	○	○	○	4 High Tone Speakers + 4 Low Tone Speakers + DTS	x	x	●
Grille Three (Grid with Black Chrome)	○	○	○	Automatically Adjustable Volume In Accordance With Vehicle Speed	●	●	●
Internal Equipments				Apple CarPlay	●	●	●
Multi-Function Steering Wheel	●	●	●	Android Auto (Overseas)	●	●	●
Leather Steering Wheel	●	●	●	W-HUD (Windshield with Heads Up Display)	x	x	●
Steering Wheel with Paddle Shifter	●	●	●	Glass/Rear-View Mirror			
4-Way Manually Adjustable Steering Wheel	●	●	●	Green Glass	●	●	●
Ordinary Threshold	●	●	x	Single Curvature External Rear View Mirror	●	●	●
Stainless Steel Threshold (Only Front Door)	x	x	●	Manually Internal Anti-glare Rear View Mirror	●	x	x
Sunvisor with Vanity Mirror, w/o Light	●	x	x	Electronic Internal Anti-glare Rear View Mirror	x	●	●
Sunvisor with Vanity Mirror with Light	x	●	●	Power Windows With One Click Lifting And Anti-pinch Function (Driver Side)	●	x	x
Wireless Charge	x	●	●	Full Power Windows With One Click Lifting And Anti-Pinch Function	x	●	●
Front 12V Power Outlet	●	●	●	Remote Control Window Closed	x	●	●
Luggage Cabin 12V Power Outlet	x	x	●	Heated Rear-view Mirror	●	●	●
Front Central Armrest	●	●	●	Electrically Adjustable Rear-view Mirror	●	●	●
Front Cupholder	●	●	●	Manually Foldable Rear-view Mirror With Turn Signal Light	●	x	x
Luggage Cover	●	●	●	Electrically Foldable Rear-View Mirror With Turn Signal Light	x	●	●
Seats Equipments				Auto Foldable Rear-view Mirror Locking	x	●	●
Artificial Leather Seat	●	●	●	Rear Windshield with Defrosting Function	x	●	●
6-Way Manual Adjustable Driver Seat	●	x	x	Light			
6-Way Electric Adjustable Driver Seat	x	●	●	LED Headlamps	●	●	●
2-Way Electric Waist Supporter Driver Seat	x	●	●	LED Tail-lamp	●	●	●
4-Way Manual Adjustable Front Passenger Seat	●	●	x	Electric Height-Adjustable Headlamps	●	●	●
4-Way Electric Adjustable Front Passenger Seat	x	x	●	Automatic Headlamps+Way-Home Lighting	●	●	●
Front Ventilated Seats	x	x	●	Dynamic Lighting Assist	x	●	●
6:4 Separated Foldable Rear Seats	●	●	●	Front Foglights: LED	●	●	●
Rear Center Headrest	●	●	●	Foglights With Assist Lighting Function	●	●	●
Central Armrest of 2nd Row Seats With Cupholder (Open)	x	●	●	Rear Foglights: LED	●	●	●
Active/Passive Safety				Daytime Running Lamps (LED)	●	●	●
Dual SRS Airbags	●	●	●	Emergency Brake Alarm System	●	●	●
Front Side Airbags	●	●	●	High Level Brake Lamp	●	●	●
Side Curtain Airbags	x	●	●	LED Reading Light	●	●	●
Front Seatbelts with Pretensioner (Two Sides)	●	●	●	Middle Ceiling Light	●	x	x
Front Seatbelt Unfastening Warning System	●	●	●	Side Ceiling Light	x	○	○
Rear Seatbelt Unfastening Warning System	●	●	●	Atmosphere Light-single Color	x	x	●
Mechanical Child Proof Safety Lock	●	●	●	Trunk Light :LED	●	●	●
ESP (Electronic Stability Program)	●	●	●	AC/Refrigerator			
TCS (Traction Control System)	●	●	●	Dual-Zone Auto AC	●	●	●
SCM (Second Collision Mitigation)	●	●	●	Second Row AC Outlet	●	●	●
CBC (Cornering Brake Control)	●	●	●	CN95 Filter	●	●	●
RMI (Roll Movement Intervention)	●	●	●	Front Windshield Automatic Defog	●	●	●
BA (Brake Assist)	●	●	●	Outside Temperature Indicator	x	●	●
HDC (Hill Descent Control)	●	●	●				
HHC (Hill-Start Assist Control)	●	●	●				
BOS (Brake Override System)	●	●	●				
TPMS (Tyre Pressure Monitoring System)	●	●	●				
USB Interface	x						
Front Radar	Two	Two	Four				
Parking Aid System	●	●	●				
(MEB) Modular Electrification Toolkit	●	●	●				